



# GENTRY FARM

King, North Carolina

**ARDEN**  
HOMES SIMPLY BUILT BETTER

# WELCOME TO GENTRY FARM

Gentry Farm lies on the outskirts of King, only minutes from town - with the convenience of city amenities and a rural feeling. Homeowners will enjoy large lots with sidewalks throughout the community, tucked away and surrounded by mature trees. Gentry Farm is less than five minutes from downtown King, its amenities, and approximately fifteen minutes from Winston-Salem. With convenient access to Mount Airy, Pilot Mountain, Winston-Salem, and Greensboro, King is an excellent place to call home

## Starting in the Mid \$400's

Gentry Farm Phase II is now under construction, which will include over 56 serene 1/2 acre to 1+ acre lots, and 12 all-brick home plans to choose from. Gentry Farm includes city amenities with a rural feeling. Multiple lots are still available for semi-custom homes that start at \$469,900.

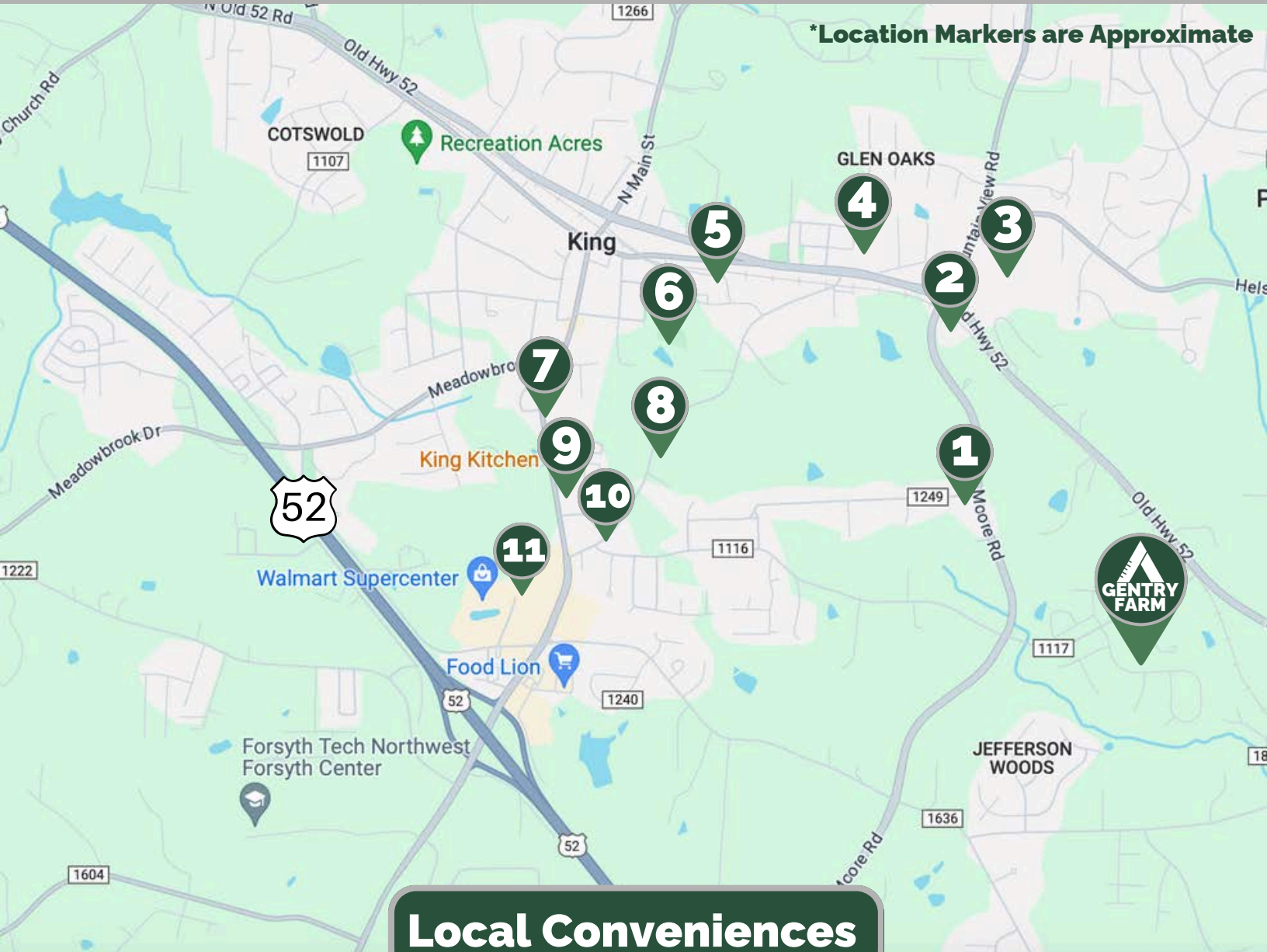
**ARDEN**  
HOMES SIMPLY BUILT BETTER

# Site Plan





\*Location Markers are Approximate



## Local Conveniences

**1** Walgreens

**2** King YMCA

**3** Sheetz

**4** King Town Barber Shop

**5** King Elementary School

**6** King Central Park

**7** Autozone

**8** King Veterinary Hospital

**9** Chick Fil A

**10** Temple & Henderson Dentist

**11**

### Five Forks Village

- Walmart
- Lowes Foods
- Verizon
- Cardinal Urgent Care
- Fitness 2000 Gym
- Stratford BBQ
- Dress My Pets | Pet Grooming



## Floor Plans

**SHERWOOD**



**EMERY**



**SOMERSET**



**LEDFORD II**



**BIRCH HAVEN**



**AYDEN**



**BROOKDALE**



**BIRCH HAVEN  
COURTYARD**



**HERITAGE  
BRIDGE**



**OAK CREST**



**ROLLER MILL**



**Interactive Floor Plans available at [www.ardenhomes.com](http://www.ardenhomes.com)**



# Sherwood

A Two Story Floor Plan

Starting at

**\$484,900**

2345+ Sqft, 2-4 Bedrooms, 2.5-3.5 Bathrooms, Attached Front Load 2 Car Garage, Main Level Owner's Suite w/ W.I.C, Laundry Room, Great Room & Dining Area, Kitchen w/ Island, Bonus Room, Storage Area, Covered Front Porch, Covered Patio

**Elevation A**



**Elevation B**



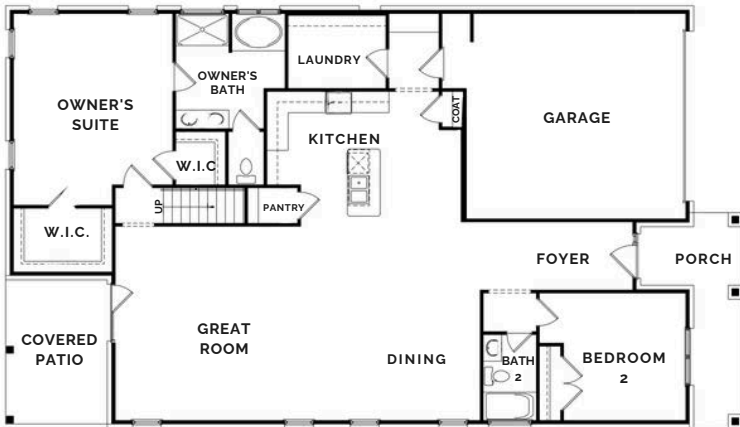
**Elevation C**



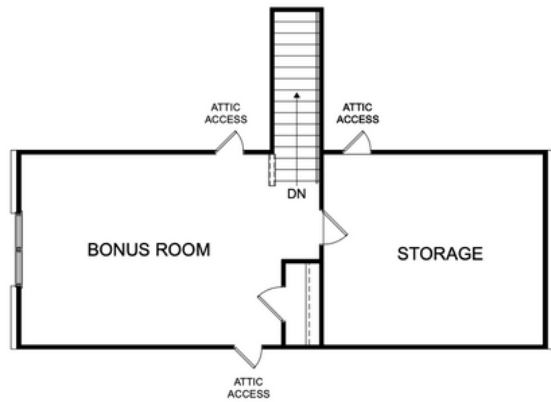
**Elevation D**



**Main Level**



**Second Level**



**Floor Plan Options:**

- Optional Screened-In Porch
- Optional Sun Room (Removes Covered Patio)
- Optional Bedroom 3 (Removes Dining Room)
- Optional Extended Garage
- Optional Bedroom 4 (Removes Storage Area 1)
- Optional Storage Area 2
- Optional Laundry Sink Cabinet & Countertop

**Alternative Layout Options:**

- Alt. Owner's Bath Walk-In Shower (2 Layouts Available)
- Alt. Kitchen Island Placement (Ask Rep.)

[Click Here to Access the Interactive Floor Plan](#)





## — Emery —

A Two Story Floor Plan

Starting at

**\$479,900**

2649+ Sqft, 3-4 Bedrooms, 2.5-3.5 Bathrooms, Attached Front Load 2 Car Garage, Main Level Owner's Suite w/ WIC, Laundry Room, Great Room w/ Fireplace & Dining Area, Kitchen w/ Island, Study, Loft, Covered Front Porch, Patio

**Elevation A**



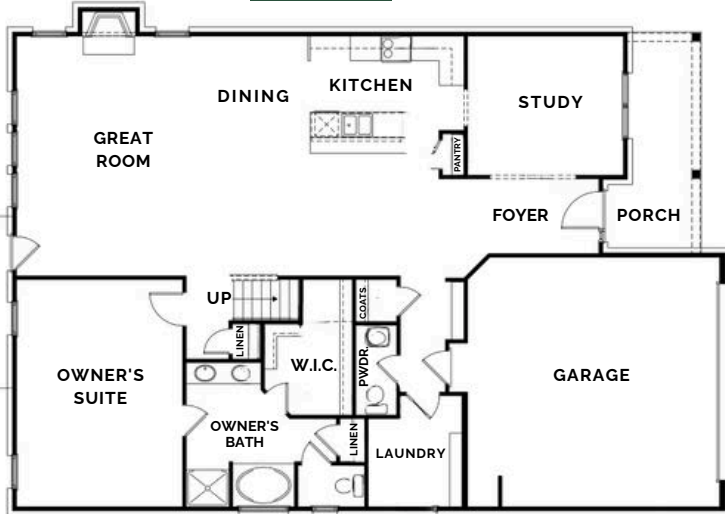
**Elevation B**



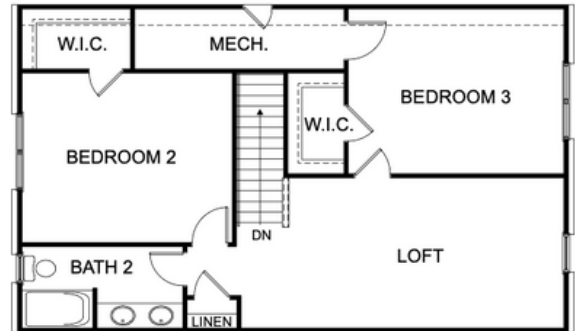
**Elevation C**



**Main Level**



**Second Level**



### Floor Plan Options:

- Optional Screened-In Porch
- Optional Dining Bay Window
- Optional Sun Room
- Optional Second Level Bonus Room (Finished or Unfinished)
- Optional Owner's Bath Walk-In Shower
- Optional Laundry Sink

### Alternative Layout Options:

- Alt. Second Level Layout (Adds Bedroom 4 & Bath 3)

[Click Here to Access the Interactive Floor Plan](#)





# — Somerset —

A Two Story Floor Plan

Starting at

**\$489,900**

2433+ Sqft, 3-4 Bedrooms, 2-3.5 Bathrooms, Attached Extended Front Load 2 Car Garage, Main Level Owner's Suite w/ WIC, Laundry Room, Family Room w/ Fireplace, Dining Room, Kitchen w/ Island & Pantry, Breakfast Area, Bonus Room, Covered Front Porch, Patio

**Elevation A**



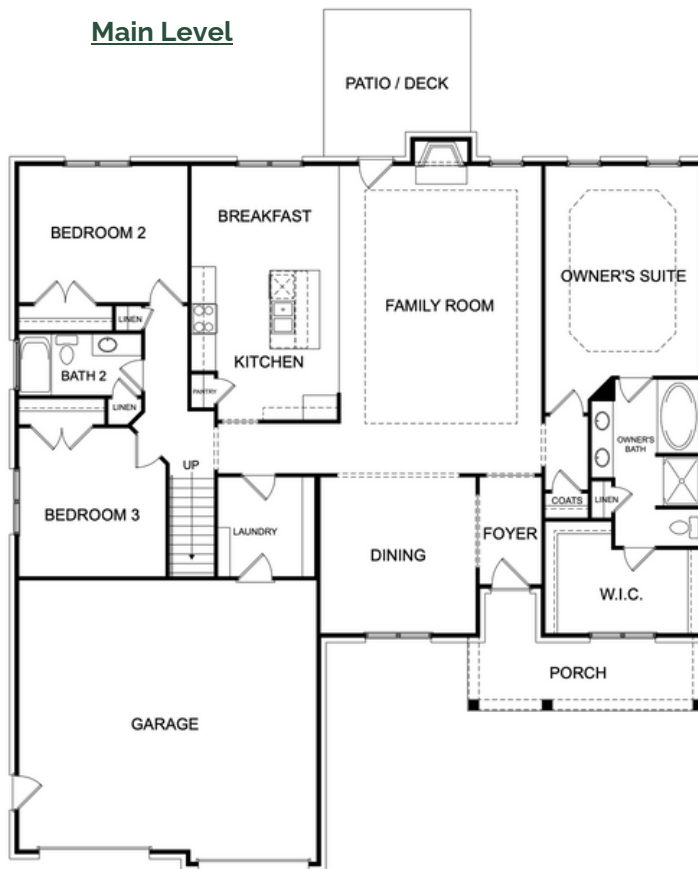
**Elevation B**



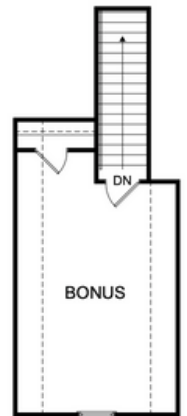
**Elevation C**



Main Level



Upper Bonus Room



### Floor Plan Options:

- Optional Screened-In Porch
- Optional Sun Room (Removes Screened-In Porch)
- Optional Owner's Bath Walk-In Shower
- Optional Powder Room
- Various Porch Sizes (Per Elevation)
- Optional Side Load Garage
- Optional Full Bath 3 (Upper Bonus Room)
- Optional Dormer (Upper Bonus Room)

[Click Here to Access the Interactive Floor Plan](#)



## — Ledford II —

A Two Story Floor Plan

Starting at

**\$489,900**

2495+ Sqft, 4 Bedrooms, 2.5-3.5 Bathrooms, Attached Front Load 2 Car Garage, Main Level Owner's Suite w/ W.I.C, Laundry Room, Great Room w/ Fireplace & Dining Area, Kitchen w/ Island, Pantry, Loft, Bonus Room, Covered Front Porch, Patio

**Elevation A**



**Elevation B**



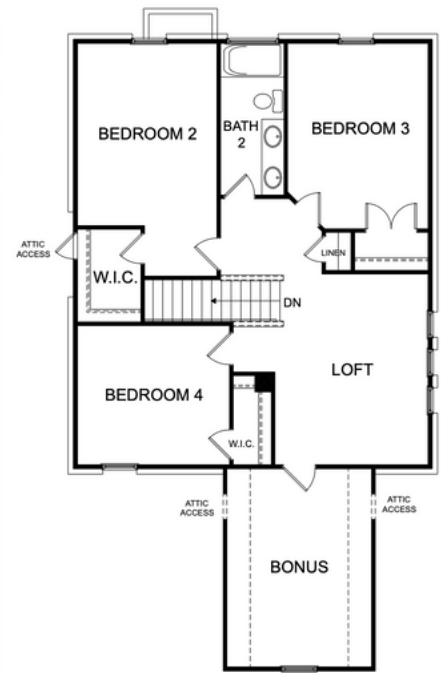
**Elevation C**



**Main Level**



**Second Level**



### Floor Plan Options:

- Optional Side-Load Garage
- Optional Screened-In Porch (Removes Deck)
- Optional Basement Foundation
- Optional Owner's Bedroom Tray Ceiling
- Optional Bath 3 (Second Level)

[Click Here to Access the Interactive Floor Plan](#)



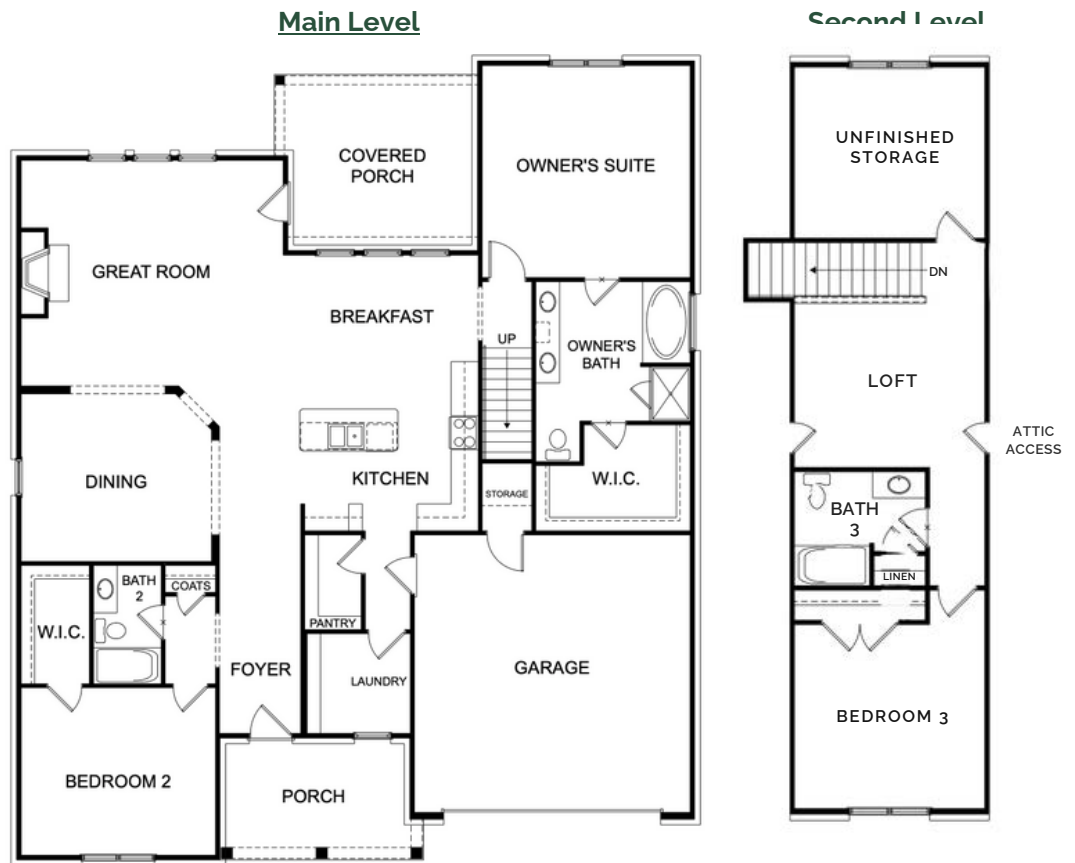
# — Birch Haven —

A Two Story Floor Plan

Starting at

## \$494,900

2578+ Sqft, 3-4 Bedrooms, 3 Bathrooms, Attached Front Load 2 Car Garage, Main Level Owner's Suite w/ W.I.C, Laundry Room, Great Room w/ Fireplace, Dining Room, Kitchen w/ Island & Walk-In Pantry, Breakfast Area, Loft, Storage Area, Covered Front & Back Porch



### Floor Plan Options:

- Optional Screened-In Porch
- Optional Dining Room Coffered Ceiling
- Great Room Options: Built-Ins, Coffered Ceiling, Tray Ceiling
- Optional Owner's Suite Tray Ceiling
- Optional Owner's Bath Walk-In Shower (Removes Tub)
- Optional Owner's Bath Upgrade (Ask Representative)
- Optional Study (Removes Dining Room)
- Optional Garage Service Door
- Optional Side Entry Garage
- Optional Second Level Bedroom 4 (Removes Unfinished Storage Area)
- Optional Second Level Dormer (Extends Loft)
- Various Front Porch Sizes (Per Elevation)
- Optional Laundry Sink (Cabinet w/ Granite Top Also Avail.)

[Click Here to Access the Interactive Floor Plan](#)







**— Ayden —**  
 A Two Story Floor Plan  
 Starting at  
**\$514,900**

2831+ Sqft, 4 Bedrooms, 3 Bathrooms, Attached Front Load 2 Car Garage, Main Level Owner's Suite w/ WIC, Laundry Room, Great Room w/ Fireplace, Dining Room, Kitchen w/ Island & Walk-In Pantry, Loft, Covered Front & Back Porch

**Elevation A**



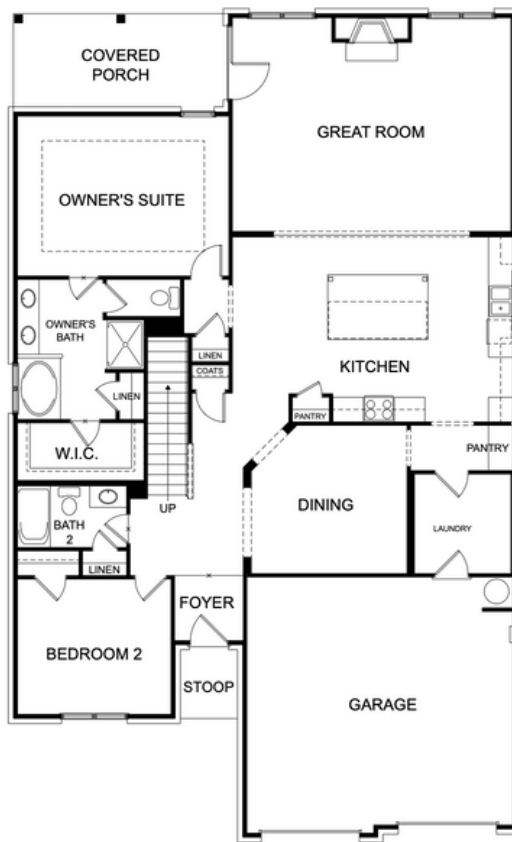
**Elevation B**



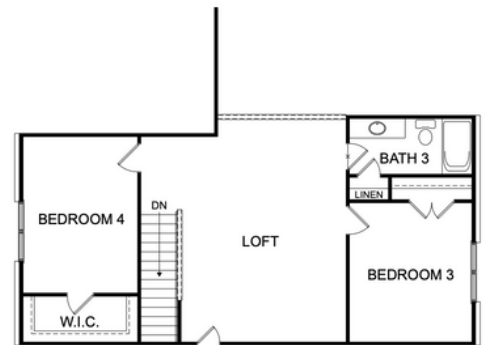
**Elevation C**



**Main Level**



**Second Level**



**Floor Plan Options:**

- Optional Extended Covered Porch
- Optional Screened-In Porch (Extended Optional Also Avail.)
- Optional Sunroom (Removes Covered Porch)
- Optional Fireplace Location (Ask Representative)
- Optional Owner's Suite Walk-In Shower (Removes Garden Tub)
- Optional Study (Removes Bedroom 2)
- Optional Garage Service Door
- Optional Side Entry Garage
- Optional Extended Loft/Dormer (Second Level)
- Various Front Porch Sizes (Per Elevation)
- Optional Laundry Sink (Cabinet w/ Granite Top Also Avail.)



\*Additional Options Available, Ask Representative

Arden Homes reserves the right to revise and/or substitute features, specifications, designs and pricing without notice. All renderings, color schemes, floor plans, maps, and displays are artists' conceptions and are not intended to be an exact depiction of the home or its surroundings.

[Click Here to Access the Interactive Floor Plan](#)

**Jerri Banner**  
**Banner Team Properties**  
 336-409-0724  
[jerribannerhomes@gmail.com](mailto:jerribannerhomes@gmail.com)





## — Brookdale —

A Two Story Floor Plan

Starting at

**\$524,900**

2747+ Sqft, 3-5 Bedrooms, 3.5-4.5 Bathrooms, Attached Front Load 2 Car Garage, Foyer, Main Level Owner's Suite w/ Sitting Space & WIC, Laundry Room w/ Drop Zone, Great Room, Dining Room, Kitchen w/ Island, Walk-In Pantry & Breakfast Area, Study, Storage Area, Covered Front & Back Porch

### Elevations

Elevation A



Elevation B



Elevation C



Elevation D



Elevation A-4



Elevation B-4



Elevation C-4



Elevation D-4



Arden Homes reserves the right to revise and/or substitute features, specifications, designs and pricing without notice. All renderings, color schemes, floor plans, maps, and displays are artists' conceptions and are not intended to be an exact depiction of the home or its surroundings.

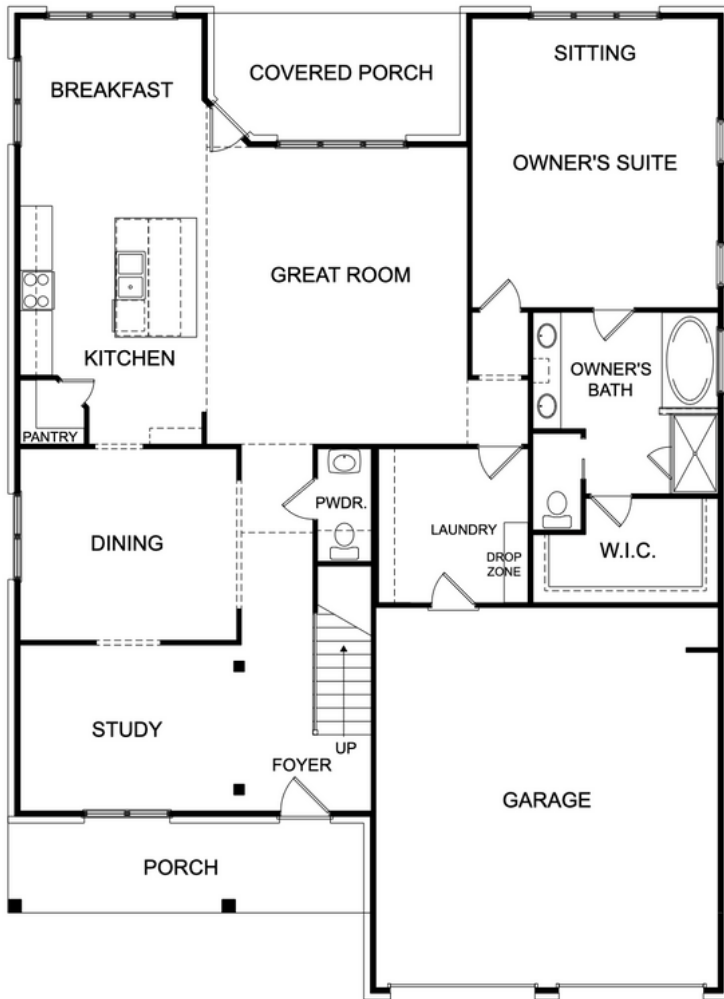
[Click Here to Access the Interactive Floor Plan](#)

*Jerri Banner*  
**Banner Team Properties**  
336-409-0724  
[jerribannerhomes@gmail.com](mailto:jerribannerhomes@gmail.com)

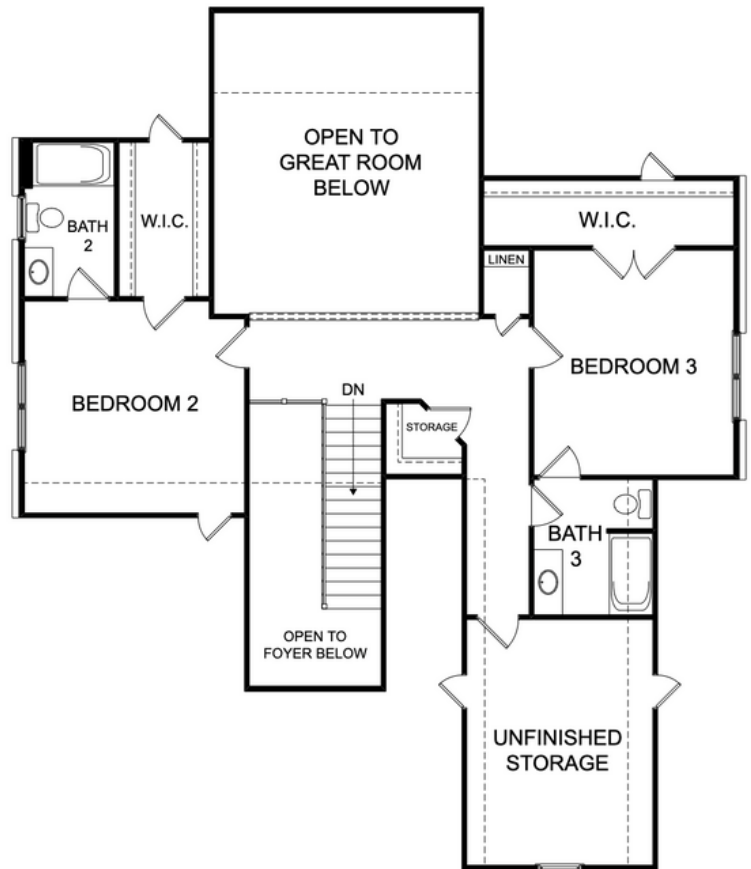


## — Brookdale — Floor Plan

Main Level



Second Level



### Floor Plan Options:

- Optional Screened-In Porch
- Optional Dining Room Coffered Ceiling
- Optional Great Room Built-Ins
- Optional Owner's Suite Walk-In Shower (Removes Garden Tub)
- Optional Bedroom 4 with Bath 4 (Removes Study)
- Optional Garage Service Door
- Optional Side Entry Garage
- Optional Second Level Bedroom 5 OR Bonus Room (Removes Unfinished Storage Area)
- Various Front Porch Sizes (Per Elevation)
- Optional Laundry Sink (Cabinet w/ Granite Top Also Avail.)







## — Birch Haven Courtyard —

A Two Story Floor Plan

Starting at

**\$559,900**

2715+ Sqft, 3-4 Bedrooms, 2.5-3.5 Bathrooms, Attached 2 Car Side Load Garage, Main Level Owner's Suite w/ WIC, Laundry Room, Great Room & Dining Room, Kitchen w/ Island, Pantry, Loft, Bonus Room, Covered Front & Back Porch



**Elevation A**



\*Additional Options Available, Ask Representative

Arden Homes reserves the right to revise and/or substitute features, specifications, designs and pricing without notice. All renderings, color schemes, floor plans, maps, and displays are artists' conceptions and are not intended to be an exact depiction of the home or its surroundings.

[Click Here to Access the Interactive Floor Plan](#)

**Jerri Banner**  
**Banner Team Properties**

336-409-0724

[jerribannerhomes@gmail.com](mailto:jerribannerhomes@gmail.com)



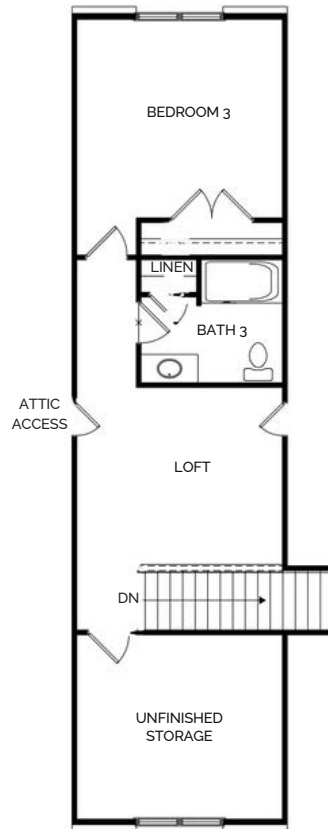
# — Birch Haven Courtyard —

## Floor Plan

Main Level



Second Level



### Floor Plan Options:

- Optional Study (Removes Dining Room)
- Optional Owner's Bath Walk-In Shower
- Optional Office Desk Cabinets & Countertop
- Optional Laundry Sink (Optional Cabinets & Countertop Also Available)
- Optional Owner's Suite Tray Ceiling
- Optional Great Room Tray Ceiling
- Optional Great Room Built-Ins
- Optional Bedroom 4 (Removes Unfinished Storage Area)
- Optional Dormer Bonus Room







## — Heritage Bridge —

A Two Story Floor Plan

Starting at

**\$584,900**

3401+ Sqft, 4-5 Bedrooms, 2.5-3.5 Bathrooms, Attached 2 Car Side Load Garage, Foyer, Main Level Owner's Suite w/ WIC, Laundry Room, Great Room w/ Fireplace, Dining Room, Kitchen w/ Island, Walk-In Pantry, Loft, Bonus Room, Covered Front Porch, Deck

**Elevation A**



**Elevation B**



**Elevation C**



\*Additional Options Available, Ask Representative

Arden Homes reserves the right to revise and/or substitute features, specifications, designs and pricing without notice. All renderings, color schemes, floor plans, maps, and displays are artists' conceptions and are not intended to be an exact depiction of the home or its surroundings.

[Click Here to Access the Interactive Floor Plan](#)

**Jerri Banner**  
**Banner Team Properties**

336-409-0724

[jerribannerhomes@gmail.com](mailto:jerribannerhomes@gmail.com)



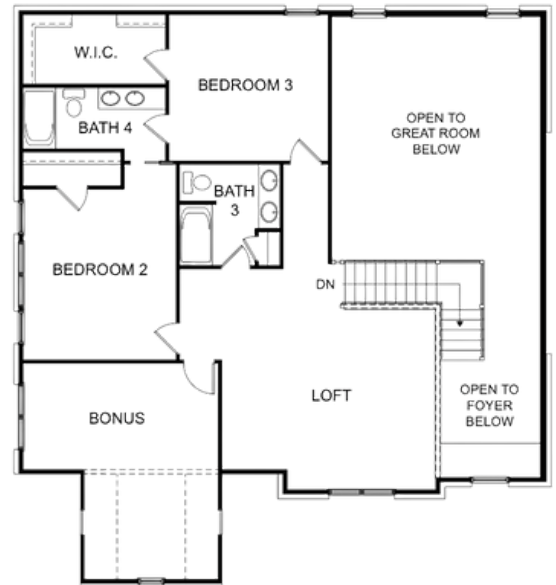
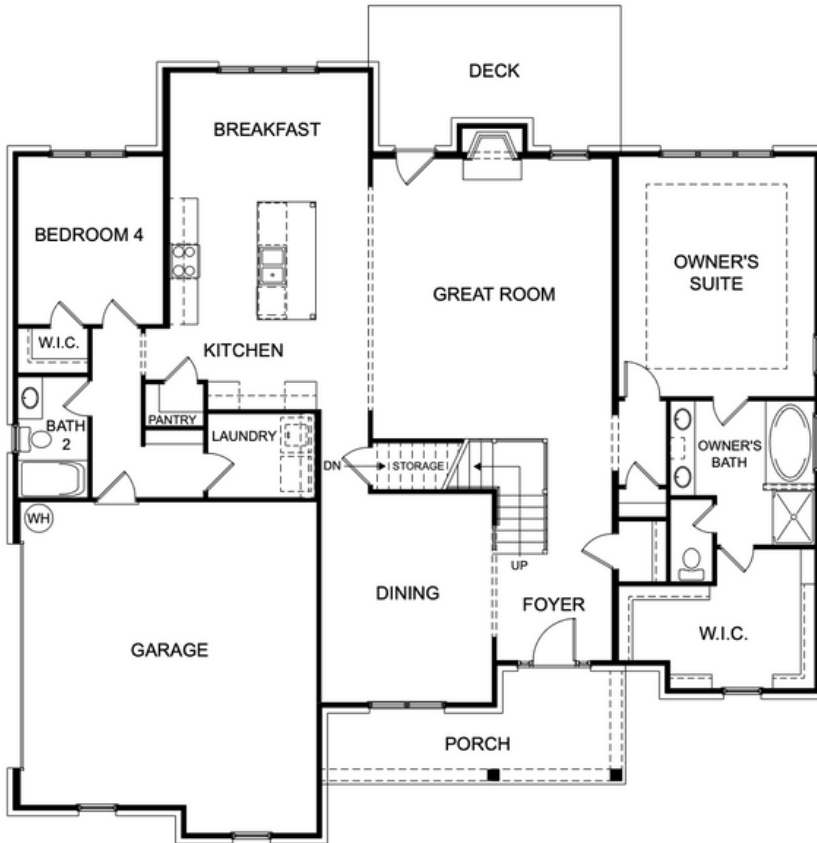


# — Heritage Bridge —

## Floor Plan

Main Level

Second Level



### Floor Plan Options:

- Optional Screen Porch (Removes Deck)
- Optional Keeping Room (Removes Bedroom 4)
- Optional Gourmet Kitchen (Gas Cooktop, Vent Hood, Wall Oven & Built-In Microwave)
- Optional Owner's Bath Walk-In Shower
- Optional Study (Removes Dining Room)
- Optional 3rd Car Garage (Front or Side Load Available)
- Optional Bedroom 5 w/ WIC & Linen Closet (Removes Loft)

### Alternative Layout Options:

- Alt. Fireplace Location w/ Built Ins





## — Oak Crest —

A Two Story Floor Plan

Starting at

**\$589,900**

3402+ Sqft, 4-5 Bedrooms, 3.5 Bathrooms, Attached 2 Car Side Load Garage, Main Level Owner's Suite w/ WIC, Laundry Room, Office, Great Room w/ Fireplace, Dining Room, Kitchen w/ Island & Breakfast Area, Pantry, Bonus Room w/ WIC, Covered Front Porch, Deck



\*Additional Options Available, Ask Representative

Arden Homes reserves the right to revise and/or substitute features, specifications, designs and pricing without notice. All renderings, color schemes, floor plans, maps, and displays are artists' conceptions and are not intended to be an exact depiction of the home or its surroundings.

[Click Here to Access the Interactive Floor Plan](#)

**Jerri Banner**  
**Banner Team Properties**  
336-409-0724  
[jerribannerhomes@gmail.com](mailto:jerribannerhomes@gmail.com)



# Oak Crest

## Floor Plan

Main Level

Second Level



### Floor Plan Options:

- Optional Screen Porch (Removes Deck)
- Optional Gourmet Kitchen (Gas Cooktop, Vent Hood, Wall Oven & Built-In Microwave)
- Optional Office Desk Cabinets w/ Countertop
- Optional Laundry Sink (Laundry Room Wall and/or Base Cabinets also available)
- Optional Owner's Suite Tray Ceiling
- Optional Owner's Bath Walk-In Shower (Garden Tub also available)
- Optional Dining Room Coffered Ceiling
- Optional 3rd Car Garage (Extends Upstairs Bonus Room)





## — **Roller Mill** —

A Two Story Floor Plan

Starting at

**\$599,900**

3378+ Sqft, 4-5 Bedrooms, 3.5-4 Bathrooms, Attached 3 Car Side Load Garage, Main Level Owner's Suite w/ WIC, Laundry Room, Great Room w/ Fireplace, Living Room, Dining Room, Kitchen w/ Island, Walk-In Pantry, Breakfast Area, Second Level Unfinished Storage Area, Covered Front Porch, Deck



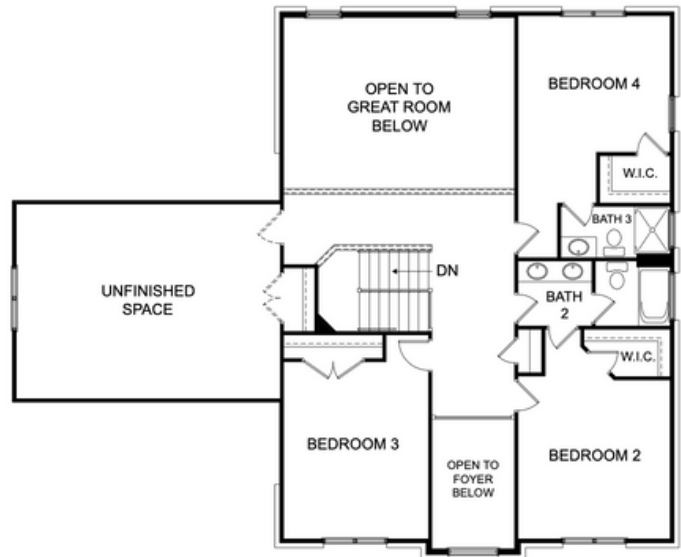
# — Roller Mill —

## Floor Plan

Main Level



Second Level



### Floor Plan Options:

- Optional Screen Porch (Removes Deck)
- Optional Gourmet Kitchen (Gas Cooktop, Vent Hood, Wall Oven & Built-In Microwave)
- Optional Laundry Sink (Laundry Room Wall and/or Base Cabinets also available)
- Optional Coffered Dining Room Ceiling
- Optional Front Load 2 Car Garage (Removes 3 Car Side Load Garage)
- Optional Bathroom 4 (Removes Powder Room)
- Optional Bedroom 5 w/ Bath 4 (Removes Powder Room & Living Room)
- Optional Second Level Game Room (Removes Unfinished Storage Area)
- Optional Second Level Children's Retreat (Removes Second Level being Open to Great Room Below)



## Standard Selection Options

### INTERIOR OPTIONS

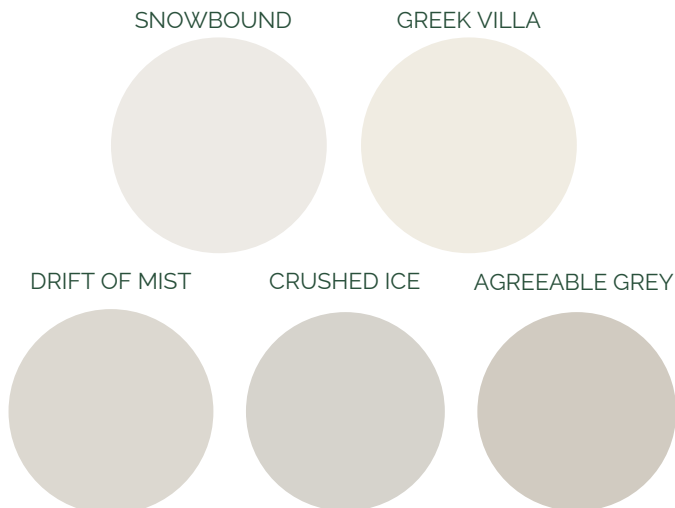
#### CABINETS



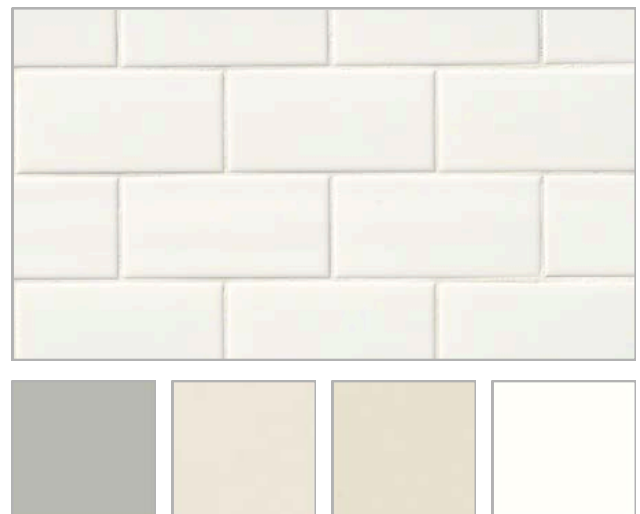
#### KITCHEN GRANITE COUNTERTOPS



#### INTERIOR PAINT



#### KITCHEN BACKPLASH





## Standard Selection Options

### FLOORING OPTIONS

#### ENGINEERED HARDWOOD



#### FLOOR TILE



#### CARPET





## Standard Selections

### Exterior Finishes

- **Foundation** - Brick Raised Slab Standard (Crawl Space for Heritage Bridge, Oak Crest, Roller Mill)
- **Deck** - Raised Patio
- **Roofing** - GAF Timberline® 30 Year - Architectural
- **Windows** - Vinyl Single Hung - White
- **Front Door** - Southwood - Mahogany - Andalucia
- **Stone Veneer** - Centurion Stone® - Choice of Style/Color (Per Plan)
- **Veneer Material** - Pine Hall Brick
- **Board & Batten** - Vinyl (Per Plan)
- **Shakes** - Vinyl (Per Plan)
- **Shutters** - Vinyl (Per Plan)
- **Porch Ceilings** - D5 Vinyl
- **Garage Door** - 1-Sided Steel - Non-Insulated - Choice of Panel - Blue Ridge Hardware & Opener
- **Mailbox** - Decorative Mailbox
- **Soffits** - D5 Vinyl

### Plumbing

- **Lavatory Fixtures** - Moen® - Eva or Brantford - Chrome
- **Kitchen Sink Fixture** - Moen® - Brantford 7185 - Chrome
- **Tub/Shower Fixture** - Moen® - Eva or Brantford - Chrome
- **Garden Tub Fixture** - Moen® - Eva or Brantford - Chrome
- **Water Heater** - American® 50 Gallon Gas Direct Vent (Some Plans may call for Electric)
- **Pedestal Sink** (Per Plan) - Gerber® - Logan Square (22-555)
- **Water Closets** - Mansfield® - Elongated Standard Height - White
- **Water Lines** - Pex Water Lines
- **Exterior Hose Bibs** - (2) Frost-Free Hose Bibs
- **Kitchen Sink** - 18 Gauge Stainless Steel Undermount w/ Choice of: 50/50 Two Bowl or 60/40 Two Bowl
- **Owner's Suite Shower** - Level 1 Ceramic Tile Floors & Walls w/ Niche (Shower Size Per Plan)
- **Secondary Bathroom Tub/Shower** - 1 Piece Fiberglass





## Standard Selections

### Heating & Air Conditioning

- **Gas Furnace** - Trane® 80% Gas (Heat Pumps Upstairs in Applicable Plans)
- **Air Conditioning Unit** - Trane® XR16
- **Thermostat** - Honeywell® Digital
- **Ductwork** - Sealed & Tested

### Electrical/Lighting

- **Interior Light Fixtures** - Progress Lighting® Fixture Package – Replay
- **Exterior Light Fixtures** - Progress Lighting® – Westport
- **Kitchen Island Pendants** - (2) Per Selected Package
- **Switch & Outlet Covers** - Standard – White – No Dimmers
- **Cable Outlets** - 2 in Great Room, 1 Per Guest Bedrooms, 2 in Master Bedroom, and 1 in Loft
- **Ceiling Fans** - Great Room, Master Bedroom, Loft
- **Ceiling Fan Prewires** - Bedrooms
- **Flood Lights** - (2) Buyer Selects Location
- **Can Lights** - Kitchen Ceiling, Over Tubs/Showers
- **Wall Conduit** - Installed over Fireplace to Run AV Cables in Wall

### Interior Finishes

- **Interior Doors** - Choice of Arden Approved Door Style - MDF Hollow Core
- **Interior Door Hardware** - Better Home Products - Noe Valley - Brushed Nickel
- **Front Door Handleset** - Better Home Products - Van Ness - Brushed Nickel
- **Cabinets (Kitchen & Baths)** - Level 1 - Stained Finish
- **Cabinet Hardware** - Choice of Arden Approved Selection
- **Granite Kitchen Countertops** - Granite - Level 1
- **Vanity Bathroom Tops** - 1.5cm Craven White Quartz - w/ 4" Splashes & Oval Sink Bowls
- **Standard Countertop Edge Profile** - Pencil Edge
- **Shower Doors** - Full Frame - Brushed Nickel or Chrome - Clear Glass (Owner's Bath Only)
- **Bath Accessories** - Better Home Products® - Miraloma Park - Brushed Nickel or Chrome
- **Fireplace Mantel** - Richland
- **Fireplace Surround** - Slate
- **Gas Log Set** - Heatilator - Caliber 36
- **Wall Paint** - Sherwin Williams® - Flat w/ Choice of one Arden Approved Color
- **Ceiling Paint** - Sherwin Williams® - Flat - Bright Ceiling White
- **Trim Paint** - Sherwin Williams® - Semi-Gloss - Extra White
- **Closet Shelving** - Ventilated White Wire
- **Kitchen Backsplash** - Level 1





## Standard Selections

### Trim Package

- **Baseboard** - 5 ¼" MDF Speed Base
- **Door Casing** - 3 ¼" SM445
- **Window Trim** - Stool on Bottom, Drywall Returns w/ Casing
- **Crown Molding** - 1 Piece - 3 5/8" #49 (Downstairs Main Living Areas & Owner's Suite Only)
- **Stairs** - Stained Open Red Oak Treads w/ Painted Pine Risers

### Floor Coverings

- **Engineered Hardwood (Foyer, Great Room, Kitchen, Dining, Breakfast, Powder, Stairs)** - Mohawk - Level 1
- **Ceramic Tile (Baths, Laundry & Mud Room)** - Daltile - Level 1
- **Carpet (Bedrooms, Loft, & Study)** - Mohawk - Reactivate - Level 1
- **Carpet Pad** - 5 lb

### Appliances

- **Dishwasher** - Frigidaire® - Gallery - FGDPH4515AF
- **Disposal** - (½ HP)
- **Slide-In Gas Range** - Frigidaire® - Gallery - FGCFG3060BF
- **Over-the-Range Microwave** - Frigidaire® - Gallery - FGMOS1962AF

### "Behind The Walls"

- **Wall Framing** - Primary 2x4 Walls - 2x6 Where Specified on Plans 16 in. on Center
- **Floor Joists** - Engineered Wood I-Joists
- **Insulation** - Batt in Walls, Blown Fiberglass in Ceilings, Caulked Studs & Electrical Boxes
- **Roof Trusses** - Engineered Pre-Fabricated Wood Trusses
- **House Wrap** - Barricade
- **Dry Wall** - ½" on Walls & Ceilings, ⅝" Fire Rated on Garage Ceilings, ½" Mold Resistant around Tubs in Bathrooms





# FOR MORE INFORMATION:



**Jerri Banner**  
Banner Team Properties  
**336-409-0724**  
[jerribannerhomes@gmail.com](mailto:jerribannerhomes@gmail.com)

